

BLAZERS - SIZE CONVERSION CHART

	M	L	XL	XXL
UK / US Chest	38	40	42	44
UK / US Waist	32	34	36	38
European	48	50	52	54
French	48	50	52	54
Italian	48	50	52	54

PRODUCT MEASUREMENT - INCHES

SIZE	BACK LENGTH	CHEST CIRCUMFERENCE	WAIST CIRCUMFERENCE	SHOULDER	SLEEVE LENGTH
38	28.5	40.5	37.5	18	24.5
40	29	42.5	39.5	18.5	25
42	29.5	44.5	41.5	19	25.5
44	30	46.5	43.5	19.5	26

PRODUCT MEASUREMENT - CM

SIZE	BACK LENGTH	CHEST CIRCUMFERENCE	WAIST CIRCUMFERENCE	SHOULDER	SLEEVE LENGTH
38	73	103	96	46	63
40	74	108	101	47	64
42	75	113	106	48	65
44	76	118	111	49	66

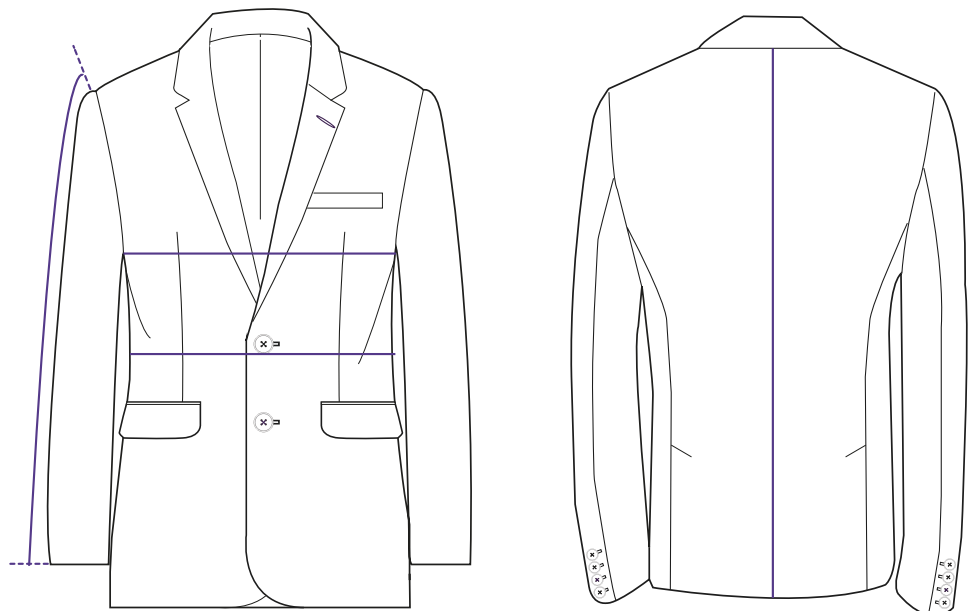
BACK LENGTH: The length of the back from the base of the collar to the hem

CHEST CIRCUMFERENCE: Lay the garment flat and double the measurement between the lowest point of the armhole seams

WAIST CIRCUMFERENCE: Lay the garment flat with buttons fastened. Measure the width of the garment exactly 20cm below the lowest point of the arm seams and double

SLEEVE LENGTH: Measured from the crown to end of cuff

SHOULDER WIDTH: Distance between shoulder seams. Measured straight across the back



DENIM - SIZE CONVERSION CHART

	S	M	L	XL	XXL
UK / US Waist	30	32	34	36	38
Italian	46	48	50	52	54
French	38	40	42	44	46

PRODUCT MEASUREMENT - INCHES

SIZE	WAIST CIRCUMFERENCE	INSIDE LEG	RISE	LEG OPENING
30	31.5	32	8	6
32	33.5	32	8.5	6.25
34	35.5	32	8.5	6.5
36	37.5	32	9	6.75
38	39.5	32	9.5	7

PRODUCT MEASUREMENT - CM

SIZE	WAIST CIRCUMFERENCE	INSIDE LEG	RISE	LEG OPENING
30	80	81	20.5	15.5
32	85	81	21.5	16
34	90	81	22.5	16.5
36	95	81	23	17
38	100	81	23.5	18

WAIST CIRCUMFERENCE:

Lay the garment flat and double the measurement between the lowest point of the armhole seams

INSIDE LEG:

The length from the crotch seam to the hem, measured along the inside seam

RISE:

The length from under the waistband seam to the crotch measured along the fly

LEG OPENING:

Lay the garment flat and double the measurement of the hem



KNITWEAR - SIZE CONVERSION CHART

	S	M	L	XL
UK / US Chest	38	40	42	44
UK / US Waist	30	32	34	36
European	46	48	50	52
French	46	48	50	52
Italian	46	48	50	52

PRODUCT MEASUREMENT - INCHES

SIZE	A - LENGTH-SNP TO HEM	B - CHEST CIRCUMFERENCE	C - SLEEVE LENGTH	D - SHOULDER WIDTH
S	27	37	25	15
M	28	39.5	25.5	16
L	28.5	41.5	26	17
XL	29.5	44	26.5	18

PRODUCT MEASUREMENT - CM

SIZE	A - LENGTH-SNP TO HEM	B - CHEST CIRCUMFERENCE	C - SLEEVE LENGTH	D - SHOULDER WIDTH
S	69	94	64	38.5
M	71	100	65	41
L	73	106	66	43.5
XL	75	112	67	46

LENGTH-SNP TO HEM:

Measure from top of shoulder seam to hem edge

CHEST:

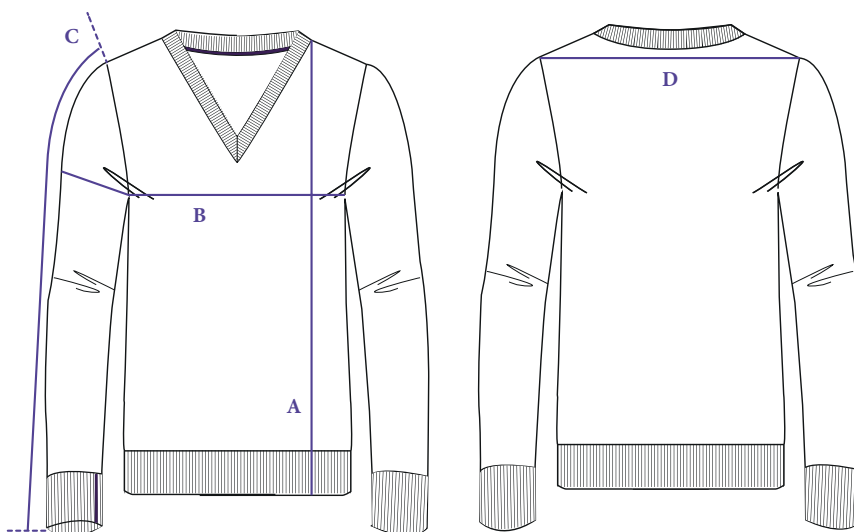
Lay the garment flat and double the measurement between the lowest point of the armhole seams

SLEEVE LENGTH:

Measured from the top of the armhole seam to end of cuff

SHOULDER WIDTH:

Distance between shoulder seams. Measured straight across the back



SHIRTS - SIZE CONVERSION CHART

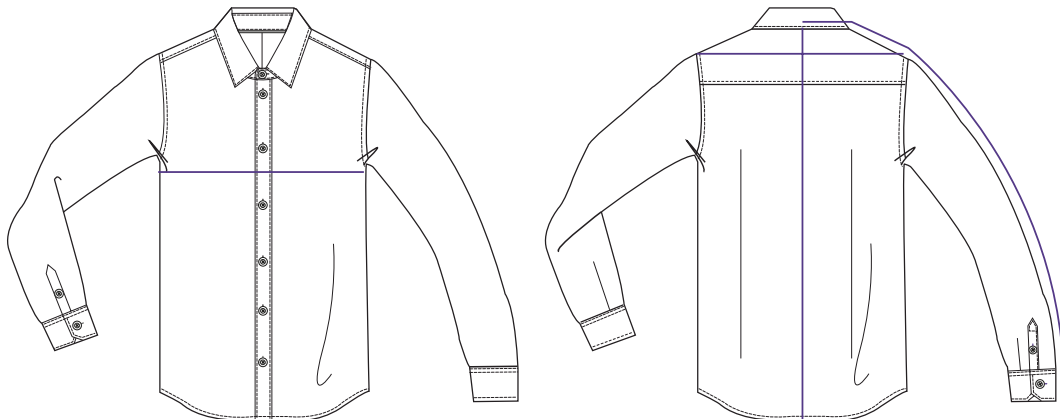
	S	M	L	XL	XXL
UK / US Collar	15	15.5	16	16.5	17
European Collar	38	39	41	42	43
Italian Collar	46	48	50	52	54

PRODUCT MEASUREMENT - INCHES

SIZE	BACK LENGTH	CHEST CIRCUMFERENCE	SHOULDER	SLEEVE LENGTH
15	31.5	41	17.5	34.5
15.5	32	43	18	35
16	32.5	45	18.5	35.5
16.5	32.5	47	19	36
17	33	49	19.5	36

PRODUCT MEASUREMENT - CM

SIZE	BACK LENGTH	CHEST CIRCUMFERENCE	SHOULDER	SLEEVE LENGTH
15	80	105	44.5	88
15.5	81	110	46	89
16	82	115	47	90
16.5	83	120	48.5	91
17	84	125	49.5	92



BACK LENGTH: The length of the back from the base of the collar to the hem

CHEST CIRCUMFERENCE: Lay the garment flat and double the measurement between the lowest point of the armhole seams

SLEEVE LENGTH: Measure from the centre of the collar to the shoulder seam, then measure from the shoulder seam to the end of the cuff, add together

SHOULDER WIDTH: Distance between shoulder seams measured straight across the back